

In This Issue ...

- *Print Server Beats PC*
- *New Product: NETPrint 500*
- *NLSP Technical Tips*
- *NETCommuter Successes*

DPI

Fall 1996

NETtalk

DIGITAL PRODUCTS, INC. • Phone (617) 647-1234 • Fax (617) 647-4474 • Web <http://www.digprod.com>

FREE

**DPI Application
Bulletin**

NDS Tips and Tricks of the Trade

Printing Via Novell NetWare Directory
Services (NDS) vs
Bindery Emulation Mode

Fax the back page or
Call 1-800-243-2333

Why DPI? ...

Established in 1984, DPI is a leading manufacturer of network printing and peripheral-sharing solutions that are easy to install, operate, and support.

1 Prices

We have competitively priced models for every need and budget -- the best values on the market.

2 Tech Support

Free technical support is offered for the life of our products. Technicians are on call 12 hours per day. An on-line bulletin board, as well as our Web site connection, contains technical information, software upgrades and new products (See back page.)

3 Development and Engineering

DPI products continue to be leaders in the industry. DPI is expanding from network/protocol services and printing applications to multi-function network devices. As a result, you can expect higher performance from DPI products than ever before.

4 Product Availability

You can purchase NETPrint, JETXPrint, and NETCommuter products worldwide from thousands of resellers. There is a wide distribution of DPI products through Ingram Micro, Tech Data, and Merisel.

5 Warranty

DPI continues to offer the best warranty in the business -- 3-years standard, 6 years upon return of warranty card.



DPI Products Have The Best NDS Support More Enhancements Planned

DPI was the first print server company to integrate the Novell Embedded Systems Technology (NEST) architecture -- Novell's most exciting innovation since entering networking -- into its NETPrint and JETXPrint 500, 1000, 1500, and 2000 family of print servers. DPI's Print Servers support both NetWare Directory Services (NDS) and Bindery Emulation modes simultaneously to all ports. Customers have found DPI products to have the easiest NDS and best support on the market.

But we're not stopping there. Vice President/Engineering Bill Peisel recently announced plans for the next release of DPI print servers to include numerous enhancements (see next column).

For the latest information, contact your account representative or visit our Web page at <http://digprod.com/> ♦



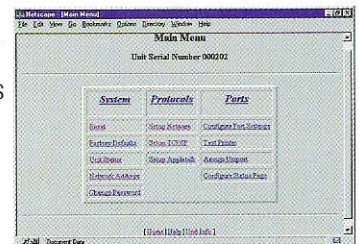
DPI Planned Upgrades For Fall Release

- ✓ Tagged binary support for Appletalk
- ✓ SNMP support for MIB II so the unit will be configurable and manageable from all popular SNMP consoles.
- ✓ An HTTP server function which works over IP and IPX to replace TelNet.
- ✓ HTML pages that allow configuration and status information to be passed to a standard browser (This will add configuration over TCP, therefore supporting Win NT better.)
- ✓ A Windows based IPX based utility that will read HTML pages, allowing an IPX only workstation to configure the unit and monitor status using HTTP
- ✓ DHCP support
- ✓ Flash download over TCP with configuration parameters maintained
- ✓ FTP printing

Web-Based Printing To Be Offered By DPI

Development underway for simplified seamless document messaging delivery system over the Internet.

DPI currently has in development an HTTP Server for its internal/external print servers and its remote access product. Users will be able to use a browser, such as Netscape Navigator, to pull up the unit's home page in order to get status and configure the unit.



Comments DPI President Pete Peterson, "While other companies have announced a vision of Internet printing, DPI is actually working towards an entire family of Internet services for its customers." The HTTP Server, available for both TCP and SPX in 1996, is the first of many network services implemented by DPI. "DPI's goal is to develop products that can deliver information on demand, when it is needed, to the people who need it, and at minimal cost. The Internet is the perfect technology to make that happen. Print server customers can buy today with the confidence that wherever the Internet is going, DPI will be there and able to support them."

Readers can view a demonstration of the new HTTP Server by accessing the following home address on the Internet: <http://199.93.124.100/> ♦

